

# PROSPERITY EASTERN IOWA REGIONAL LABORSHED AREA



A STUDY IN LABOR AVAILABILITY AND WORKFORCE CHARACTERISTICS  
EXECUTIVE SUMMARY

[WORKFORCE.IOWA.GOV/LABORSHED](http://WORKFORCE.IOWA.GOV/LABORSHED)

RELEASED  
2024

ESTIMATED POPULATION  
AGES 18-64

301,234

TOTAL ESTIMATED LABOR  
FORCE AGES 18-64

241,948



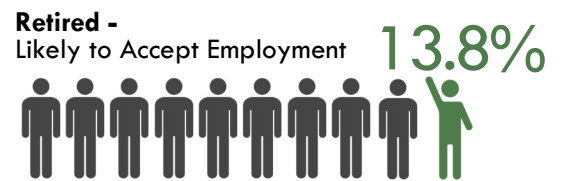
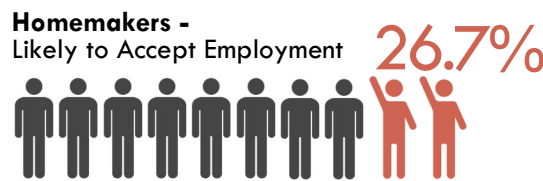
AREA SHOWN

# PROSPERITY EASTERN IOWA LABORSHED ANALYSIS

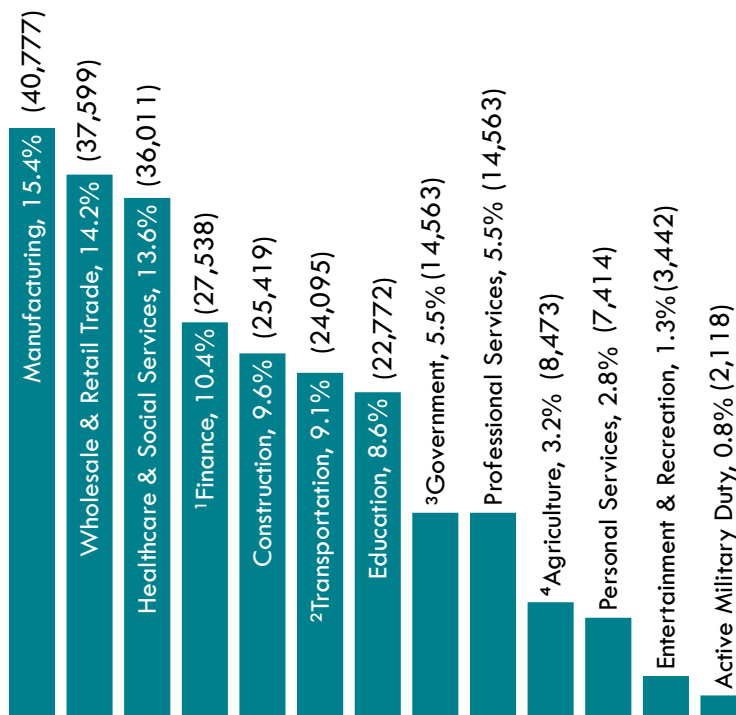
## EMPLOYMENT STATUS (ESTIMATED TOTAL)\*



\*Employment status is self-identified by the survey respondent. The unemployment percentage above does not reflect the unemployment rate published by the U.S. Bureau of Labor Statistics, which applies a stricter definition.



## BREAKOUT OF THE EMPLOYED BY INDUSTRY (ESTIMATED TOTAL)



<sup>1</sup>Finance, Insurance, & Real Estate  
<sup>2</sup>Transportation, Communications, & Utilities  
<sup>3</sup>Public Administration, Government

<sup>4</sup>Agriculture, Forestry, & Mining

Totals may vary due to rounding.

## TOP CURRENT BENEFITS OF THE FULL-TIME EMPLOYED

	Paid Sick Leave/PTO/ Vacation	95.1%
	Pension/Retirement/401K	93.3%
	Health/Medical Insurance	91.2%
	Dental Coverage	90.4%
	Paid Holiday	86.3%
	Vision Coverage	83.8%
	Disability Insurance	82.7%
	Life Insurance	81.9%
	Flex Spending Account	66.8%
	Prescription Drug Coverage	65.7%

A Laborshed area is defined by its commuting pattern and illustrates which communities contribute to an employment center's workforce and at what level. To determine the boundaries of a Laborshed area, local employers supply the residential ZIP codes of each of their employees. The data in this publication reflects characteristics specific to the workforce in the Prosperity Eastern Iowa Laborshed area.

The employed are currently commuting an average of—



## EMPLOYED: LIKELY TO CHANGE

- **28.6%** of employed individuals are likely to change their current employment situation for a new opportunity.

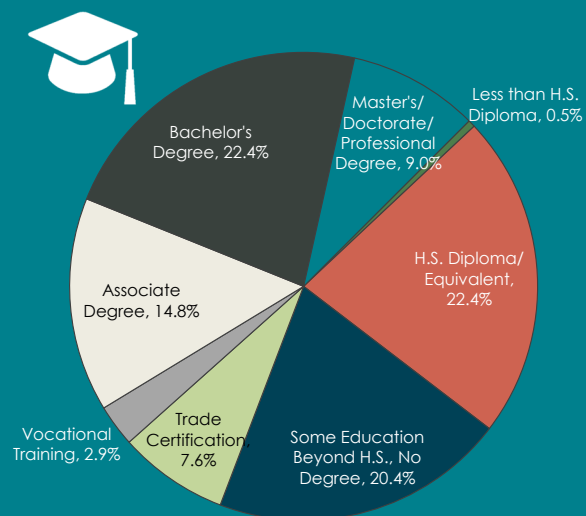
- Current occupational categories:

<b>Production, Construction, Material Moving</b>	<b>37.2%</b>
<b>Professional, Paraprofessional, Technical</b>	<b>28.5%</b>
<b>Service</b>	<b>10.1%</b>
<b>Managerial</b>	<b>8.7%</b>
<b>Clerical</b>	<b>7.7%</b>
<b>Sales</b>	<b>7.2%</b>
<b>Agricultural</b>	<b>0.6%</b>

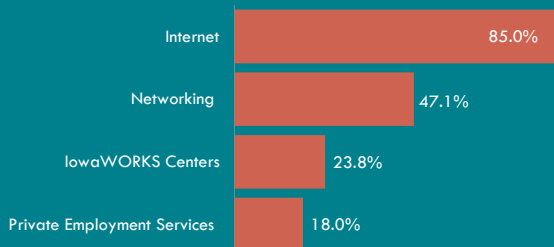
- Current median wages: \$

- \$21.00/hour and \$61,000/year
- \$25.00/hour - attracts 66%
- \$28.00/hour - attracts 75%

- 77.1% have an education beyond HS



- **28.6%** are actively seeking employment
- Most frequently identified job search resources:



- Top sites:



- Top newspapers:



- Commute:

- Currently commuting an average of **16 miles/20 minutes** (one-way) to work
- Willing to commute an average of **27 miles/35 minutes** (one-way) to work

## UNEMPLOYED: LIKELY TO ACCEPT

- **75.4%** of unemployed individuals are likely to accept an employment opportunity.

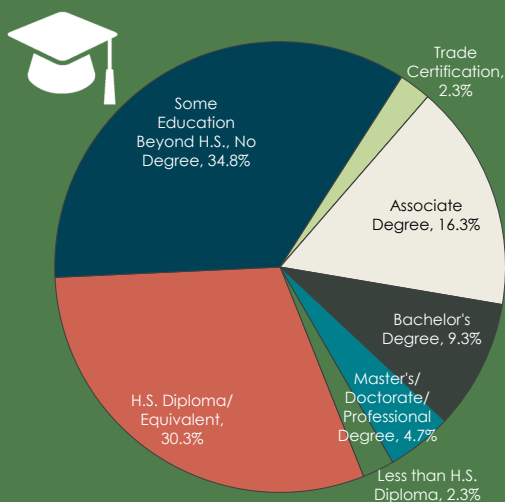
- Former occupational categories:

<b>Production, Construction, Material Moving</b>	<b>34.1%</b>
<b>Service</b>	<b>26.3%</b>
<b>Professional, Paraprofessional, Technical</b>	<b>23.7%</b>
<b>Clerical</b>	<b>5.3%</b>
<b>Managerial</b>	<b>5.3%</b>
<b>Sales</b>	<b>5.3%</b>
<b>Agricultural</b>	<b>0.0%</b>

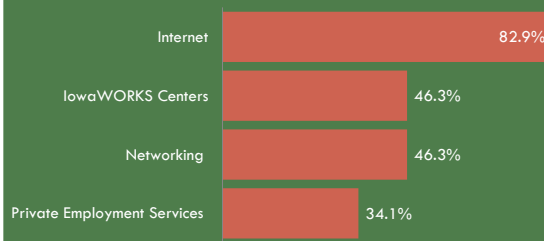
- Median wages: \$

- \$16.00/hour - lowest willing to accept
- \$19.00/hour - attracts 66%
- \$20.00/hour - attracts 75%

- 67.4% have an education beyond HS



- **44.2%** are actively seeking employment
- Most frequently identified job search resources:



- Top sites:



- Top newspapers:



- Commute:

- Willing to commute an average of **21 miles/34 minutes** (one-way) to work



This regional analysis is based on aggregated data from the Dubuque and Maquoketa Laborshed studies.

These results are based upon a total of

**835**


completed surveys.

For more data visit:  
<https://workforce.iowa.gov/laborshed>



## EDUCATION OF AVAILABLE LABOR BY INDUSTRY OF CURRENT OR FORMER EMPLOYMENT

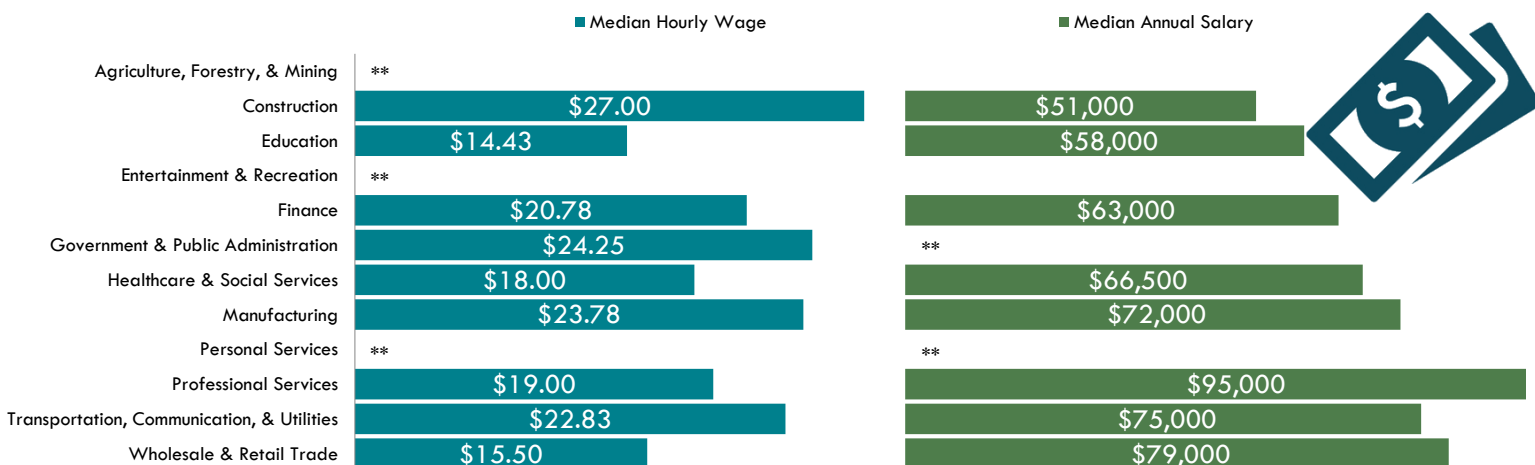
Data on this page is specific to only those survey respondents that reported they are likely to change or accept employment.



Industry	Education Beyond HS	Some Education Beyond HS, No Degree Obtained	Trade Certification/Vocational Training	Associate Degree	Bachelor's Degree or Above
Agriculture, Forestry, & Mining	**	**	**	**	**
Construction	65.0%	40.0%	10.0%	5.0%	10.0%
Education	88.0%	8.0%	0.0%	12.0%	68.0%
Entertainment & Recreation	**	**	**	**	**
Finance, Insurance, & Real Estate	77.9%	16.7%	16.7%	16.7%	27.8%
Government & Public Administration	83.4%	16.7%	25.0%	16.7%	25.0%
Healthcare & Social Services	78.0%	28.0%	4.0%	18.0%	28.0%
Manufacturing	69.1%	16.7%	16.7%	9.5%	26.2%
Personal Services	50.0%	33.3%	0.0%	16.7%	0.0%
Professional Services	69.3%	7.7%	0.0%	23.1%	38.5%
Transportation, Communication, & Utilities	84.0%	24.0%	16.0%	16.0%	28.0%
Wholesale & Retail Trade	61.1%	27.8%	0.0%	19.4%	13.9%

Top percentages among industries per education level are highlighted in the table. \*\*Insufficient survey data/refused

## WAGES OF AVAILABLE LABOR BY INDUSTRY OF CURRENT OR FORMER EMPLOYMENT






\*\*Insufficient survey data/refused. A lack of data for a particular industry is not necessarily indicative that there were no (or few) individuals surveyed within that industry. Rather, it may be that there simply were no respondents within that industry that also reported that they are likely to change or accept employment.

Note: A wide variety of occupations are included within these industry categories. Industry classification is based upon the respondent's reported current or former employer. Two respondents that work for a manufacturer will be classified within the manufacturing industry even if, for example, one respondent is a custodian and the other is an accountant.

## UNDEREMPLOYMENT

The underemployed are working fewer than 35 hours per week but desire more hours (**inadequate hours**); in positions that do not meet their skill or education level, or have worked for higher wages at previous employment (**mismatch of skills**); or are earning wages equal to or less than the national poverty level and work 35 or more hours per week (**low income**).

Percent Surveyed		Percent Surveyed	
 Inadequate Hours	2.0%	 Mismatch of Skills	8.4%
 Low Income	0.5%	$\Sigma$ †Total	10.1%

†Individuals may be underemployed for more than one reason but are counted only once for total estimated underemployment.

Note: To be counted as underemployed in any category an individual must be currently employed and likely to change their current employment situation.



Data compiled and analyzed by:  
Iowa Workforce Development  
Labor Market Information Division  
1000 E. Grand Avenue, Des Moines, Iowa 50319  
Phone: (515) 281-3035 | Email: laborshed.studies@iwd.iowa.gov  
workforce.iowa.gov/laborshed

For more information regarding this Laborshed study contact:  
Prosperity Eastern Iowa  
7600 Commerce Park  
Dubuque, IA 52002  
Phone: (563) 556-4166 | E-mail: hmcpherson@ecia.org  
www.prosperityeasterniowa.org

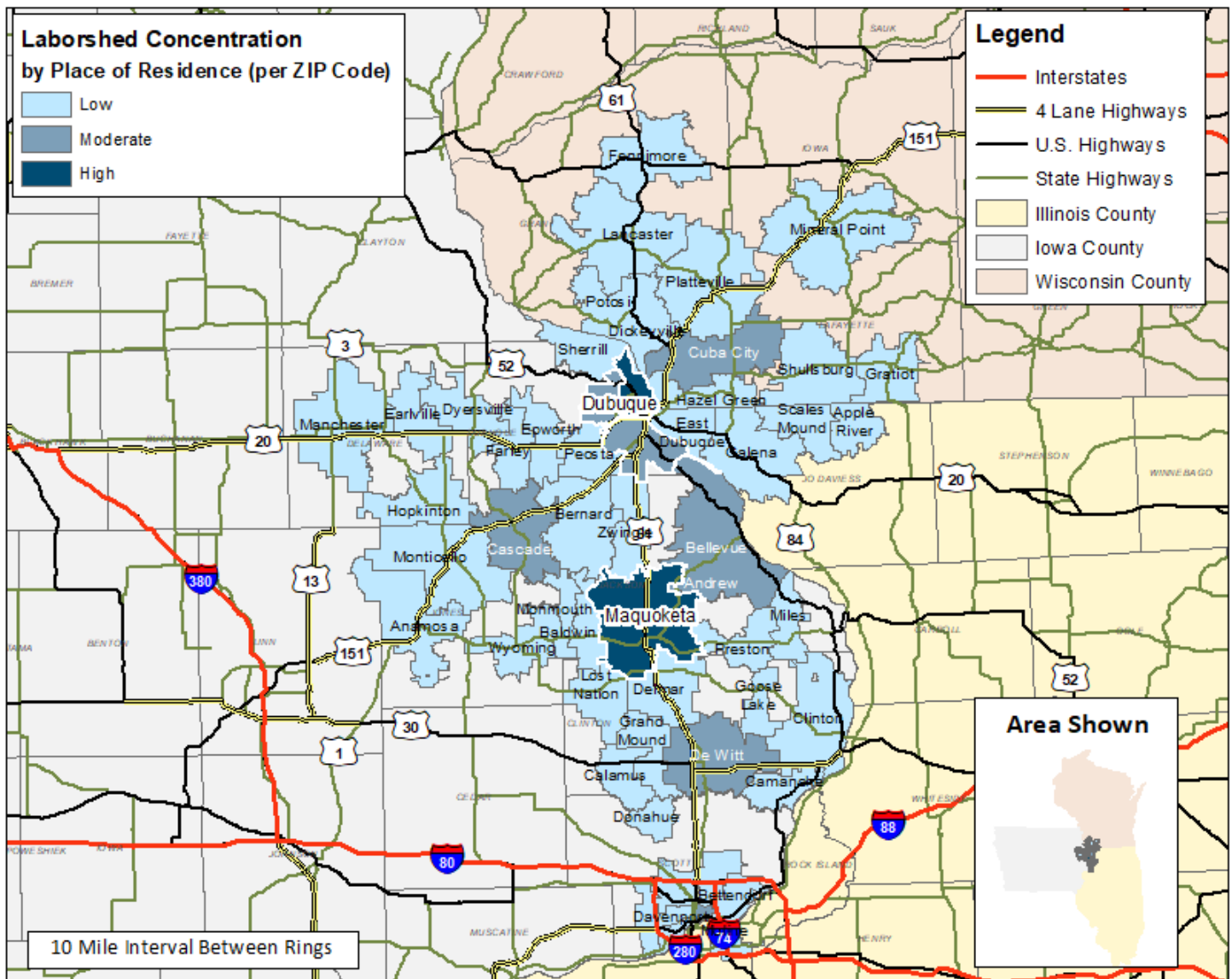
# LABOR CHARACTERISTICS



## ADVANCED MANUFACTURING

### PROSPERITY EASTERN IOWA REGION

CONCENTRATION OF RESPONDENTS WITHIN THE LABORSHED AREA  
WITH TRANSFERABLE EXPERIENCE/SKILLS BY PLACE OF RESIDENCE



Workers who have transferable experience/skills in the industry are currently commuting an average of 20 miles one way for work. Those who are likely to change/accept employment are willing to commute an average of 28 miles one way for the right employment opportunity.

FOR MORE INFORMATION REGARDING THE PROSPERITY EASTERN IOWA REGION REGIONAL LABORSHED, CONTACT:



Prosperity Eastern Iowa  
7600 Commerce Park  
Dubuque, IA 52002

Phone: (563) 556-4166 | E-mail: [hmcpherson@ecia.org](mailto:hmcpherson@ecia.org)  
[www.prosperityeasterniowa.org](http://www.prosperityeasterniowa.org)



# LABOR CHARACTERISTICS

## ADVANCED MANUFACTURING

### ESTIMATED AVAILABLE LABOR PER OCCUPATIONAL CATEGORY:

- Architectural and Engineering Managers - 0.6%
- Assemblers and Fabricators, All Other - 0.6%
- Bus and Truck Mechanics and Diesel Engine Specialists - 0.6%
- Computer Hardware Engineers - 0.6%
- Crane and Tower Operators - 3.1%
- Cutting, Punching, & Press Machine Setters & Operators, Metal & Plastic - 0.6%
- Electrical and Electronic Engineering Technicians - 1.9%
- Electricians - 4.3%
- Engine and Other Machine Assemblers - 0.6%
- Engineering Technicians, Except Drafters, All Other - 1.2%
- Engineers, All Other - 2.5%
- First-Line Supervisors of Mechanics, Installers, and Repairers - 3.7%
- First-Line Supervisors of Production and Operating Workers - 5%
- Heavy and Tractor-Trailer Truck Drivers - 20.5%
- Industrial Engineers - 1.9%
- Industrial Machinery Mechanics - 0.6%
- Industrial Production Managers - 3.1%
- Industrial Truck and Tractor Operators - 1.9%
- Inspectors, Testers, Sorters, Samplers, and Weighers - 1.9%
- Installation, Maintenance, and Repair Workers, All Other - 3.7%
- Laborers and Freight, Stock, and Material Movers, Hand - 6.8%
- Light Truck or Delivery Services Drivers - 1.2%
- Machinists - 3.1%
- Maintenance Workers, Machinery - 1.2%
- Material Moving Workers, All Other - 0.6%
- Mechanical Engineers - 1.2%
- Millwrights - 0.6%
- Multiple Machine Tool Setters & Operators, Metal and Plastic - 3.1%
- Packers and Packagers, Hand - 3.1%
- Patternmakers, Metal and Plastic - 0.6%
- Production Workers, All Other - 6.2%
- Team Assemblers - 4.3%
- Water and Wastewater Treatment Plant and System Operators - 2.5%
- Welders, Cutters, Solderers, and Brazers - 6.2%

### UNDEREMPLOYMENT (ESTIMATED):

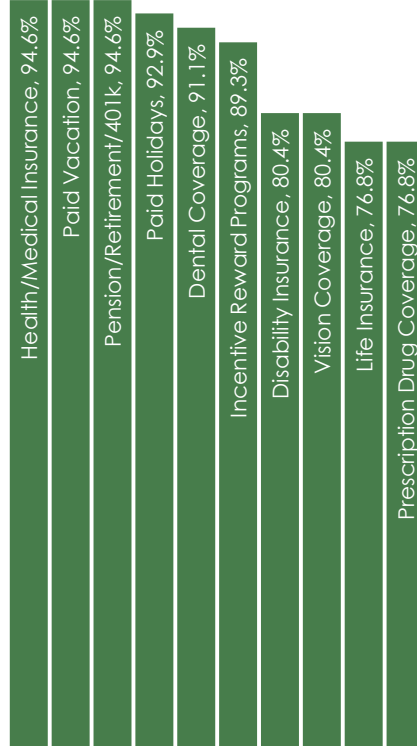
- Low hours - 1.9%
- Low income - 1.9%
- Mismatch of skills - 9.3%
- Total - 12.4%

(Individuals counted only once when estimating Total Underemployment.)

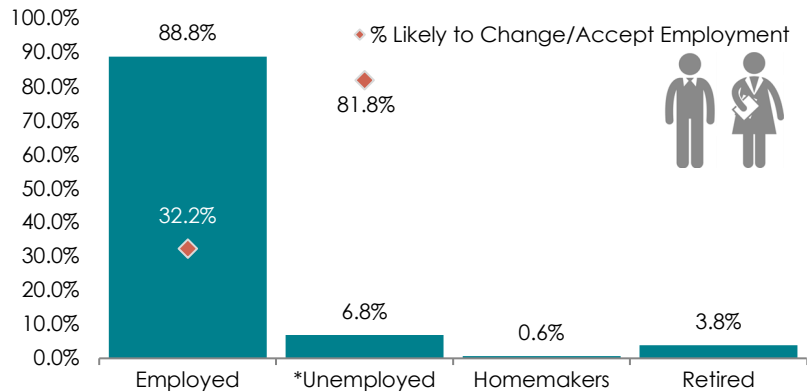
### CURRENT BENEFITS:



### DESIRED BENEFITS:



### ESTIMATED TOTAL BY EMPLOYMENT STATUS (PERCENTAGE):



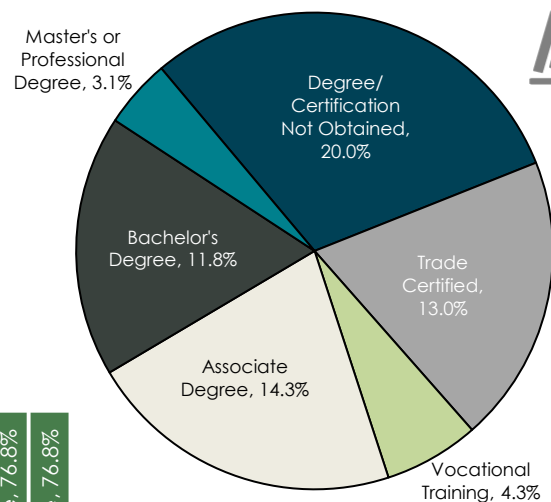
\*Employment status is self-identified by the survey respondent. The unemployment percentage does not reflect the unemployment rate published by the U.S. Bureau of Labor Statistics, which applies a stricter definition.

### EMPLOYMENT STATS:

- 69.6% paid an hourly wage
- 92.5% are/were employed full-time
- 7.5% are/were employed part-time
- 7.7% are/were self-employed
- 11.9% hold two or more jobs
- Currently working an average of 47 hours/week

### EDUCATIONAL LEVEL:

(66.5% HAVE AN EDUCATION BEYOND HIGH SCHOOL)



### TOP JOB SEARCH RESOURCES:

(For those seeking employment opportunities, by use.)

- Internet - 72.6%
  - [www.indeed.com](http://www.indeed.com)
  - [www.linkedin.com](http://www.linkedin.com)
  - [www.facebook.com](http://www.facebook.com)
  - Company/Organization Websites
- Networking through friends, family or acquaintances - 47.1%
- IowaWORKS Centers - 22.9%
- Private Employment Services - 18.5%



# LABOR CHARACTERISTICS

## ADVANCED MANUFACTURING

OCCUPATION	OCCUPATIONAL CODE	MEAN WAGE	ENTRY WAGE	EXPERIENCED WAGE	MEDIAN WAGE	MEAN ANNUAL SALARY
Adhesive Bonding Machine Operators and Tenders	51-9191	\$20.36	\$16.04	\$22.52	\$21.36	\$42,344
Architectural and Engineering Managers	11-9041	\$64.67	\$49.54	\$72.24	\$63.45	\$134,523
Bus and Truck Mechanics and Diesel Engine Specialists	49-3031	\$25.09	\$18.16	\$28.55	\$23.76	\$52,183
Chemical Engineers	17-2041	\$51.89	\$37.04	\$59.31	\$49.12	\$107,927
Chemical Equipment Operators and Tenders	51-9011	\$21.96	\$16.44	\$24.72	\$21.48	\$45,672
Chemical Plant and System Operators	51-8091	\$27.36	\$22.18	\$29.95	\$26.32	\$56,909
Computer Hardware Engineers	17-2061	\$41.21	\$28.03	\$47.80	\$38.99	\$85,722
Conveyor Operators and Tenders	53-7011	\$20.00	\$14.78	\$22.60	\$20.42	\$41,592
Crane and Tower Operators	53-7021	\$30.08	\$22.71	\$33.76	\$27.29	\$62,568
Crushing, Grinding, and Polishing Machine Setters, Operators, and Tenders	51-9021	\$24.20	\$19.69	\$26.45	\$23.30	\$50,327
Cutting and Slicing Machine Setters, Operators, and Tenders	51-9032	\$21.09	\$15.98	\$23.65	\$20.75	\$43,877
Cutting, Punching, and Press Machine Setters, Operators, and Tenders, Metal and Plastic	51-4031	\$20.17	\$15.72	\$22.40	\$19.25	\$41,958
Electrical and Electronic Engineering Technicians	17-3023	\$32.32	\$24.46	\$36.25	\$33.29	\$67,218
Electrical and Electronics Repairers, Commercial and Industrial Equipment	49-2094	\$33.90	\$27.03	\$37.33	\$33.23	\$70,510
Electrical Engineers	17-2071	\$47.95	\$34.20	\$54.83	\$49.25	\$99,739
Electricians	47-2111	\$28.90	\$19.65	\$33.53	\$29.61	\$60,121
Electro-Mechanical Technicians	17-3024	\$37.21	\$27.93	\$41.85	\$37.97	\$77,393
Electronics Engineers, Except Computer	17-2072	\$43.92	\$34.09	\$48.83	\$43.98	\$91,344
Engineering Technicians, Except Drafters, All Other	17-3029	\$30.64	\$18.64	\$36.64	\$29.81	\$63,727
Engineers, All Other	17-2199	\$43.35	\$31.21	\$49.42	\$44.65	\$90,166
First-Line Supervisors of Mechanics, Installers, and Repairers	49-1011	\$34.13	\$22.41	\$39.99	\$32.98	\$70,988
First-Line Supervisors of Production and Operating Workers	51-1011	\$31.50	\$21.42	\$36.54	\$30.15	\$65,511
Foundry Mold and Coremakers	51-4071	\$21.46	\$16.29	\$24.05	\$21.24	\$44,635
Furnace, Kiln, Oven, Drier, and Kettle Operators and Tenders	51-9051	\$22.56	\$17.99	\$24.85	\$19.16	\$46,927
Heat Treating Equipment Setters, Operators, and Tenders, Metal and Plastic	51-4191	\$24.79	\$18.95	\$27.71	\$28.34	\$51,568
Heavy and Tractor-Trailer Truck Drivers	53-3032	\$25.07	\$17.70	\$28.75	\$23.63	\$52,139
Helpers--Production Workers	51-9198	\$20.02	\$15.06	\$22.50	\$20.35	\$41,642
Industrial Engineering Technicians	17-3026	\$26.99	\$17.71	\$31.63	\$26.50	\$56,141
Industrial Engineers	17-2112	\$44.46	\$34.82	\$49.29	\$45.81	\$92,482
Industrial Machinery Mechanics	49-9041	\$28.75	\$22.20	\$32.02	\$28.92	\$59,797
Industrial Production Managers	11-3051	\$51.85	\$33.78	\$60.88	\$47.91	\$107,843
Industrial Truck and Tractor Operators	53-7051	\$20.14	\$16.49	\$21.96	\$19.04	\$41,885
Inspectors, Testers, Sorters, Samplers, and Weighers	51-9061	\$22.38	\$16.83	\$25.15	\$22.24	\$46,544
Installation, Maintenance, and Repair Workers, All Other	49-9099	\$19.31	\$14.37	\$21.78	\$18.64	\$40,171
Laborers and Freight, Stock, and Material Movers, Hand	53-7062	\$18.06	\$13.38	\$20.41	\$17.70	\$37,575
Light Truck or Delivery Services Drivers	53-3033	\$19.43	\$11.88	\$23.21	\$17.65	\$40,420
Machine Feeders and Offbearers	53-7063	\$21.86	\$14.40	\$25.59	\$20.33	\$45,476
Machinists	51-4041	\$24.83	\$19.26	\$27.62	\$23.26	\$51,647
Maintenance Workers, Machinery	49-9043	\$27.73	\$22.41	\$30.39	\$28.22	\$57,671
Material Moving Workers, All Other	53-7199	\$18.70	\$15.87	\$20.12	\$17.83	\$38,906
Materials Engineers	17-2131	\$43.34	\$31.03	\$49.50	\$40.98	\$90,157
Mechanical Drafters	17-3013	\$32.28	\$22.51	\$37.16	\$33.69	\$67,136
Mechanical Engineering Technicians	17-3027	\$28.07	\$19.91	\$32.15	\$29.02	\$58,391
Mechanical Engineers	17-2141	\$44.19	\$33.36	\$49.61	\$40.54	\$91,916
Metal-Refining Furnace Operators and Tenders	51-4051	\$28.15	\$25.47	\$29.49	\$28.91	\$58,546
Millwrights	49-9044	\$28.35	\$20.82	\$32.12	\$28.00	\$58,974
Model Makers, Metal and Plastic	51-4061	\$30.32	\$25.74	\$32.61	\$31.08	\$63,065
Molders, Shapers, and Casters, Except Metal and Plastic	51-9195	\$21.07	\$16.36	\$23.42	\$21.01	\$43,825
Multiple Machine Tool Setters, Operators, and Tenders, Metal and Plastic	51-4081	\$21.16	\$16.62	\$23.43	\$20.92	\$44,004
Packaging and Filling Machine Operators and Tenders	51-9111	\$18.84	\$14.55	\$20.98	\$18.51	\$39,185
Packers and Packagers, Hand	53-7064	\$16.23	\$13.20	\$17.75	\$15.97	\$33,768
Patternmakers, Metal and Plastic	51-4062	\$27.96	\$23.96	\$29.96	\$29.49	\$58,159
Pourers and Casters, Metal	51-4052	\$27.19	\$19.09	\$31.24	\$28.76	\$56,553
Production Workers, All Other	51-9199	\$19.65	\$14.30	\$22.33	\$18.97	\$40,874
Structural Metal Fabricators and Fitters	51-2041	\$24.97	\$20.17	\$27.36	\$24.08	\$51,930
Tool and Die Makers	51-4111	\$25.66	\$18.86	\$29.06	\$27.28	\$53,378
Tool Grinders, Filers, and Sharpeners	51-4194	\$20.33	\$14.58	\$23.21	\$18.46	\$42,294
Water and Wastewater Treatment Plant and System Operators	51-8031	\$25.24	\$19.70	\$28.00	\$25.58	\$52,491
Welders, Cutters, Solderers, and Brazers	51-4121	\$22.34	\$18.30	\$24.36	\$22.48	\$46,462

The 2023 Iowa Wage data for the Prosperity Eastern Iowa Region Laborshed area was produced by the Labor Force & Occupational Analysis Bureau to provide communities local information on wages by occupation. The source of the wage and employment data is based on the May 2022 OEWS estimates. Additional occupational wage and employment data can be found at <https://workforce.iowa.gov/laborshed>.

Balance of data compiled by Iowa Workforce Development using Laborshed data released in 2024.

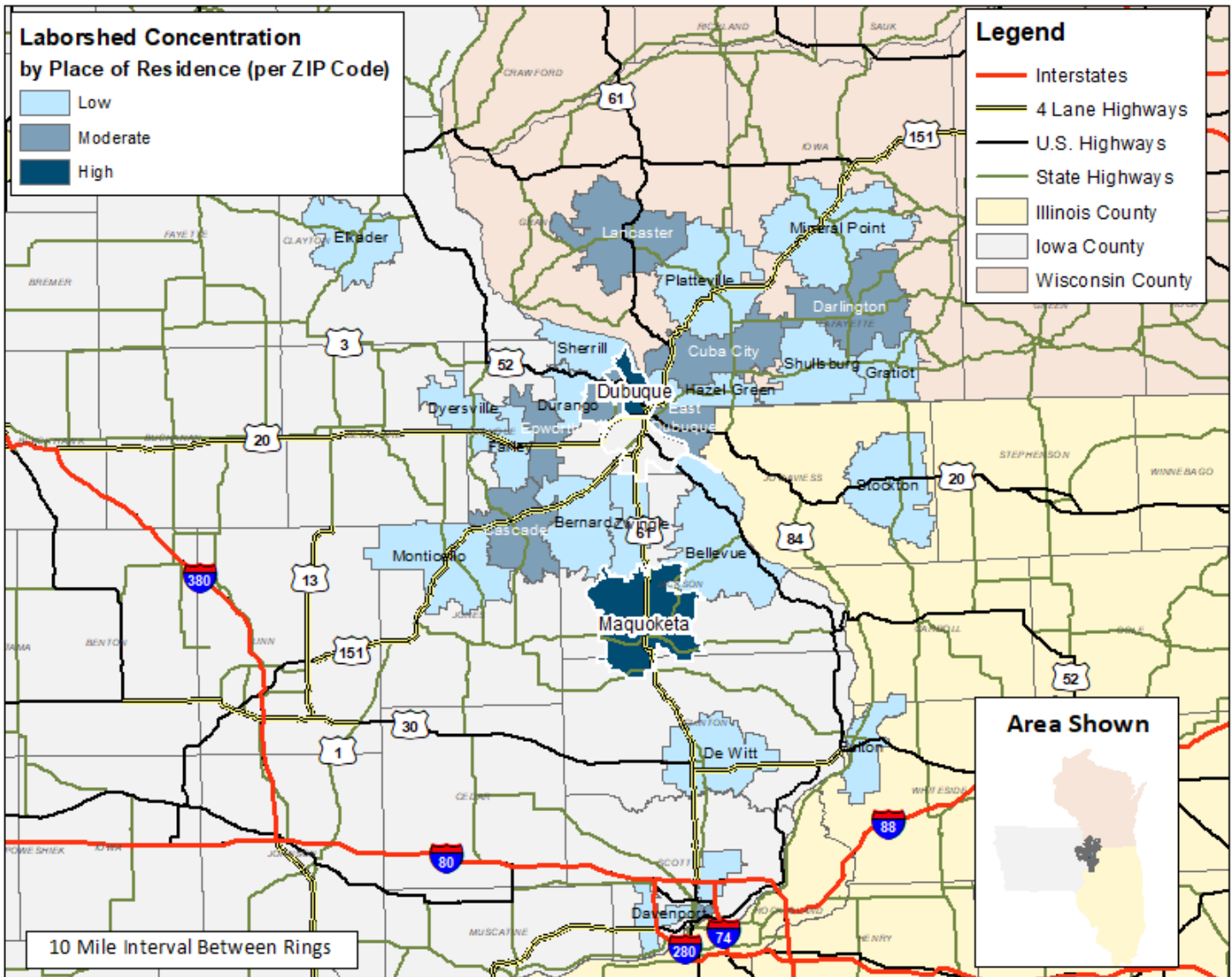
# LABOR CHARACTERISTICS

## BIOTECHNOLOGY

### PROSPERITY EASTERN IOWA REGION



CONCENTRATION OF RESPONDENTS WITHIN THE LABORSHED AREA  
WITH TRANSFERABLE EXPERIENCE/SKILLS BY PLACE OF RESIDENCE



Workers who have transferable experience/skills in the industry are currently commuting an average of 17 miles one way for work. Those who are likely to change/accept employment are willing to commute an average of 30 miles one way for the right employment opportunity.

FOR MORE INFORMATION REGARDING THE PROSPERITY EASTERN IOWA REGION REGIONAL LABORSHED, CONTACT:



Prosperity Eastern Iowa  
7600 Commerce Park  
Dubuque, IA 52002

Phone: (563) 556-4166 | E-mail: [hmcpherson@ecia.org](mailto:hmcpherson@ecia.org)  
[www.prosperityeasterniowa.org](http://www.prosperityeasterniowa.org)



# LABOR CHARACTERISTICS



## BIOTECHNOLOGY

### ESTIMATED AVAILABLE LABOR PER OCCUPATIONAL CATEGORY:

- Architectural and Engineering Managers - 1.7%
- Conservation Scientists - 1.7%
- Dietetic Technicians - 3.3%
- Engineering Technicians, Except Drafters, All Other - 3.3%
- Engineers, All Other - 6.7%
- Farmers, Ranchers, and Other Agricultural Managers - 31.7%
- Farmworkers and Laborers, Crop, Nursery, and Greenhouse - 3.3%
- First-Line Supervisors of Production and Operating Workers - 13.3%
- Industrial Engineers - 5%
- Industrial Production Managers - 8.3%
- Inspectors, Testers, Sorters, Samplers, and Weighers - 5%
- Life, Physical, and Social Science Technicians, All Other - 3.3%
- Medical and Clinical Laboratory Technicians - 1.7%
- Medical and Clinical Laboratory Technologists - 3.3%
- Veterinary Technologists and Technicians - 1.7%
- Water and Wastewater Treatment Plant and System Operators - 6.7%

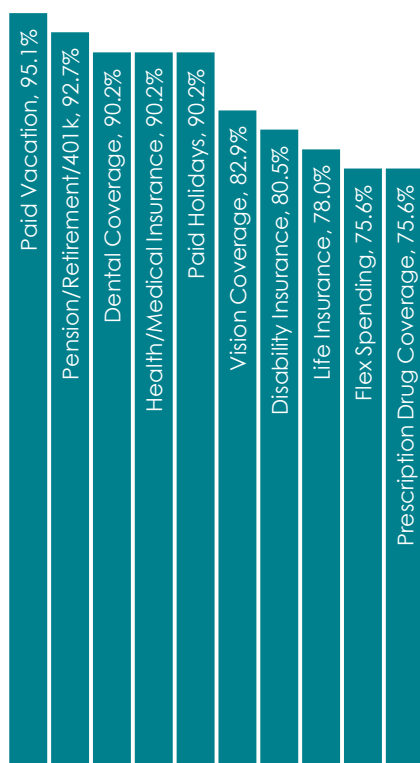
### UNDEREMPLOYMENT (ESTIMATED):

- Low hours - 0.0%
- Low income - 1.7%
- Mismatch of skills - 3.3%
- Total - 5.0%

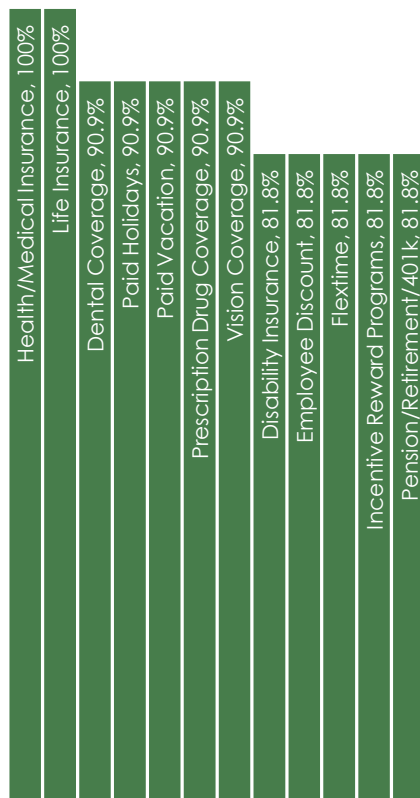
(Individuals counted only once when estimating Total Underemployment.)



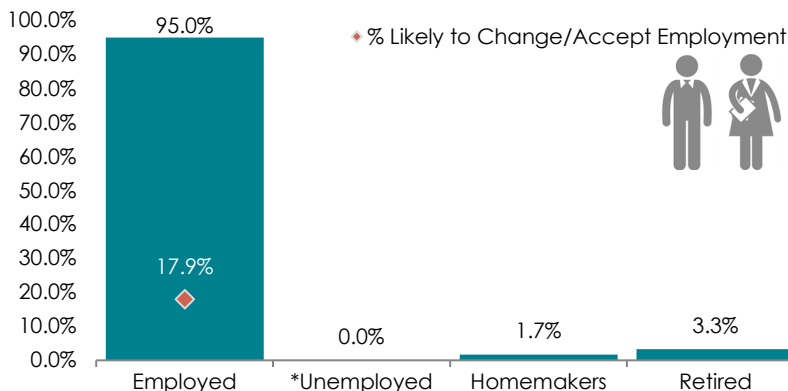
### CURRENT BENEFITS:



### DESIRED BENEFITS:



### ESTIMATED TOTAL BY EMPLOYMENT STATUS (PERCENTAGE):



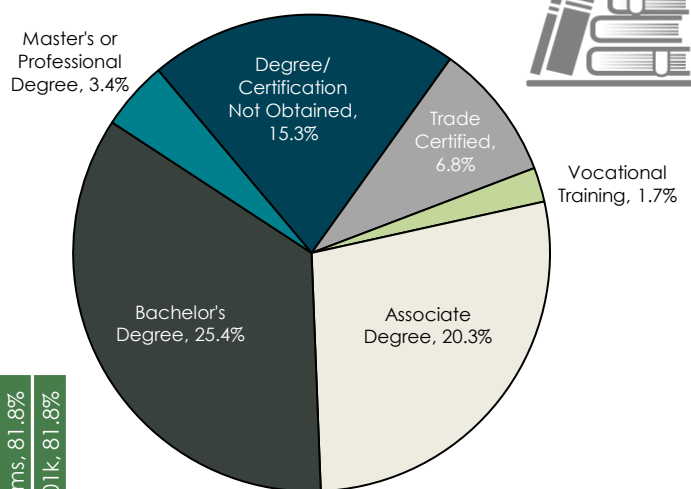
\*Employment status is self-identified by the survey respondent. The unemployment percentage does not reflect the unemployment rate published by the U.S. Bureau of Labor Statistics, which applies a stricter definition.

### EMPLOYMENT STATS:

- 50.0% paid an annual salary
- 100% are/were employed full-time
- 0.0% are/were employed part-time
- 35.1% are/were self-employed
- 17.5% hold two or more jobs
- Currently working an average of 54 hours/week

### EDUCATIONAL LEVEL:

(72.9% HAVE AN EDUCATION BEYOND HIGH SCHOOL)



### TOP JOB SEARCH RESOURCES:

(For those seeking employment opportunities, by use.)

- Internet - 82.8%
  - [www.indeed.com](http://www.indeed.com)
  - [www.linkedin.com](http://www.linkedin.com)
  - [www.facebook.com](http://www.facebook.com)
- Networking through friends, family or acquaintances - 51.7%
- IowaWORKS Centers - 27.6%
- Private Employment Services - 20.7%



# LABOR CHARACTERISTICS



## BIOTECHNOLOGY

OCCUPATION	OCCUPATIONAL CODE	MEAN WAGE	ENTRY WAGE	EXPERIENCED WAGE	MEDIAN WAGE	MEAN ANNUAL SALARY
Agricultural Inspectors	45-2011	\$26.45	\$21.14	\$29.11	\$25.73	\$55,024
Animal Breeders	45-2021	\$22.13	\$15.32	\$25.53	\$22.41	\$46,028
Architectural and Engineering Managers	11-9041	\$64.67	\$49.54	\$72.24	\$63.45	\$134,523
Biological Scientists, All Other	19-1029	\$34.73	\$22.58	\$40.81	\$32.46	\$72,247
Biological Technicians	19-4021	\$21.39	\$15.33	\$24.42	\$20.07	\$44,495
Chemical Engineers	17-2041	\$51.89	\$37.04	\$59.31	\$49.12	\$107,927
Chemical Equipment Operators and Tenders	51-9011	\$21.96	\$16.44	\$24.72	\$21.48	\$45,672
Chemical Plant and System Operators	51-8091	\$27.36	\$22.18	\$29.95	\$26.32	\$56,909
Chemical Technicians	19-4031	\$18.80	\$14.73	\$20.83	\$17.97	\$39,094
Chemists	19-2031	\$33.89	\$25.75	\$37.95	\$32.62	\$70,485
Conservation Scientists	19-1031	\$28.72	\$21.80	\$32.19	\$27.18	\$59,747
Dietetic Technicians	29-2051	\$15.13	\$13.39	\$15.99	\$15.10	\$31,463
Dietitians and Nutritionists	29-1031	\$28.31	\$21.80	\$31.57	\$28.62	\$58,892
Engineering Technicians, Except Drafters, All Other	17-3029	\$30.64	\$18.64	\$36.64	\$29.81	\$63,727
Engineers, All Other	17-2199	\$43.35	\$31.21	\$49.42	\$44.65	\$90,166
Environmental Engineers	17-2081	\$48.18	\$35.62	\$54.45	\$44.63	\$100,207
Environmental Scientists and Specialists, Including Health	19-2041	\$31.62	\$21.68	\$36.59	\$32.64	\$65,772
Farmers, Ranchers, and Other Agricultural Managers	11-9013	\$43.62	\$25.28	\$52.78	\$44.24	\$90,721
Farmworkers and Laborers, Crop, Nursery, and Greenhouse	45-2092	\$15.08	\$11.14	\$17.05	\$14.49	\$31,364
First-Line Supervisors of Farming, Fishing, and Forestry Workers	45-1011	\$32.52	\$20.07	\$38.75	\$34.80	\$67,644
First-Line Supervisors of Production and Operating Workers	51-1011	\$31.50	\$21.42	\$36.54	\$30.15	\$65,511
Industrial Engineers	17-2112	\$44.46	\$34.82	\$49.29	\$45.81	\$92,482
Industrial Production Managers	11-3051	\$51.85	\$33.78	\$60.88	\$47.91	\$107,843
Inspectors, Testers, Sorters, Samplers, and Weighers	51-9061	\$22.38	\$16.83	\$25.15	\$22.24	\$46,544
Life, Physical, and Social Science Technicians, All Other	19-4099	\$21.96	\$15.00	\$25.45	\$16.41	\$45,686
Medical Scientists, Except Epidemiologists	19-1042	\$34.64	\$25.31	\$39.30	\$28.49	\$72,052
Natural Sciences Managers	11-9121	\$43.73	\$28.29	\$51.45	\$39.20	\$90,957
Nuclear Medicine Technologists	29-2033	\$36.14	\$32.40	\$38.01	\$35.92	\$75,179
Plant and System Operators, All Other	51-8099	\$33.14	\$27.58	\$35.92	\$31.52	\$68,925
Separating, Filtering, Clarifying, Precipitating, and Still Machine Setters, Operators, and Tenders	51-9012	\$22.55	\$16.80	\$25.43	\$23.30	\$46,905
Soil and Plant Scientists	19-1013	\$37.44	\$24.14	\$44.08	\$37.34	\$77,870
Veterinary Technologists and Technicians	29-2056	\$17.84	\$14.61	\$19.45	\$17.22	\$37,105
Water and Wastewater Treatment Plant and System Operators	51-8031	\$25.24	\$19.70	\$28.00	\$25.58	\$52,491
Zoologists and Wildlife Biologists	19-1023	\$30.76	\$20.41	\$35.93	\$36.34	\$63,974

The 2023 Iowa Wage data for the Prosperity Eastern Iowa Region Laborshed area was produced by the Labor Force & Occupational Analysis Bureau to provide communities local information on wages by occupation. The source of the wage and employment data is based on the May 2022 OEWS estimates. Additional occupational wage and employment data can be found at <https://workforce.iowa.gov/laborshed>.

Balance of data compiled by Iowa Workforce Development using Laborshed data released in 2024.

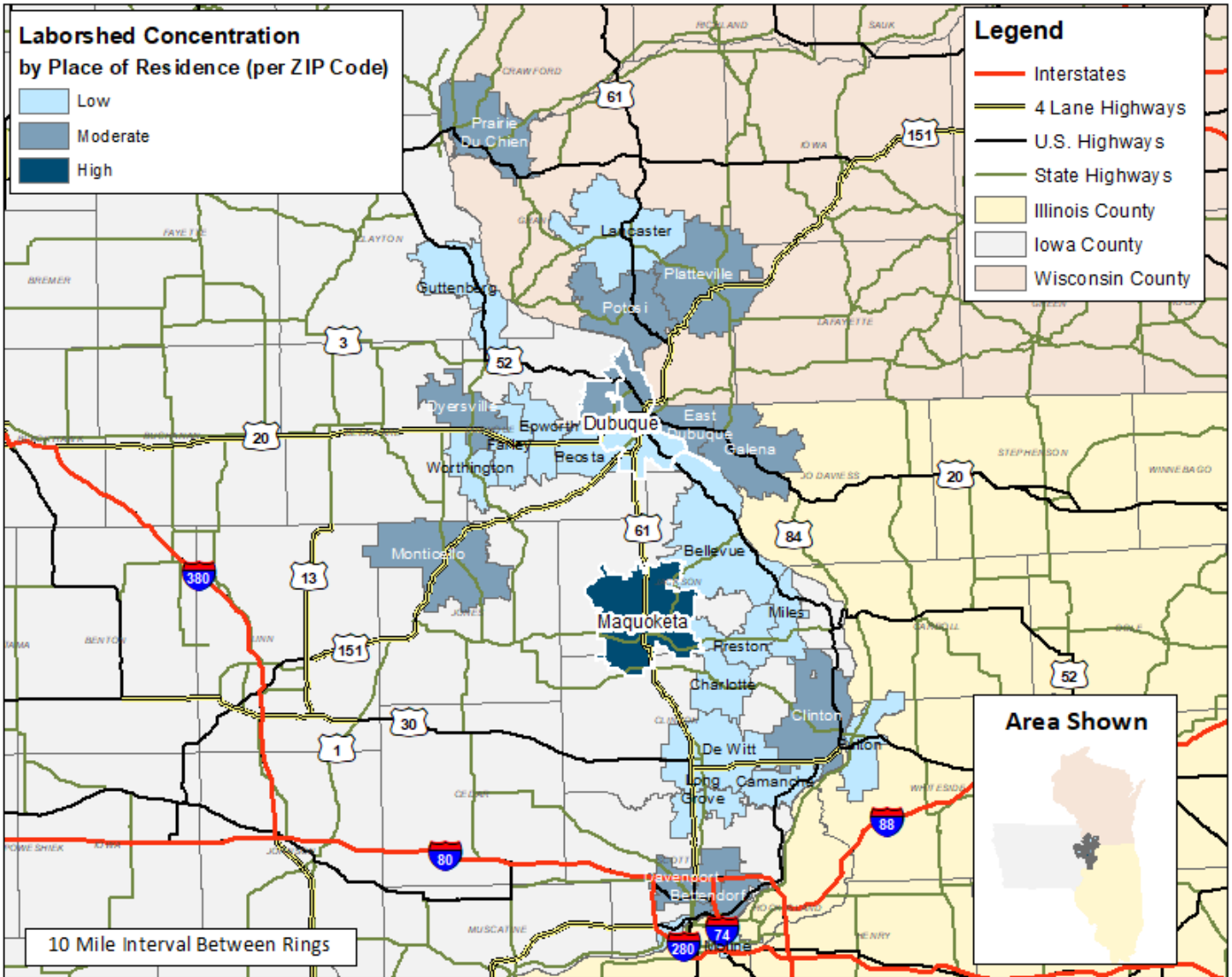
# LABOR CHARACTERISTICS

## FINANCIAL SERVICES

### PROSPERITY EASTERN IOWA REGION



CONCENTRATION OF RESPONDENTS WITHIN THE LABORSHED AREA  
WITH TRANSFERABLE EXPERIENCE/SKILLS BY PLACE OF RESIDENCE



Workers who have transferable experience/skills in the industry are currently commuting an average of 10 miles one way for work. Those who are likely to change/accept employment are willing to commute an average of 21 miles one way for the right employment opportunity.

FOR MORE INFORMATION REGARDING THE PROSPERITY EASTERN IOWA REGION REGIONAL LABORSHED, CONTACT:



Prosperity Eastern Iowa  
7600 Commerce Park  
Dubuque, IA 52002

Phone: (563) 556-4166 | E-mail: [hmcpherson@ecia.org](mailto:hmcpherson@ecia.org)  
[www.prosperityeasterniowa.org](http://www.prosperityeasterniowa.org)

# LABOR CHARACTERISTICS



## FINANCIAL SERVICES

### ESTIMATED AVAILABLE LABOR PER OCCUPATIONAL CATEGORY:

- Accountants and Auditors - 6.8%
- Bill and Account Collectors - 1.4%
- Bookkeeping, Accounting, and Auditing Clerks - 5.4%
- Claims Adjusters, Examiners, and Investigators - 10.8%
- Credit Analysts - 1.4%
- Credit Authorizers, Checkers, and Clerks - 1.4%
- Credit Counselors - 1.4%
- Customer Service Representatives - 21.6%
- Financial Analysts - 2.7%
- Financial Managers - 5.4%
- Financial Specialists, All Other - 2.7%
- Insurance Claims and Policy Processing Clerks - 1.4%
- Insurance Sales Agents - 9.5%
- Loan Interviewers and Clerks - 1.4%
- Loan Officers - 4.1%
- Personal Financial Advisors - 4.1%
- Securities, Commodities, and Financial Services Sales Agents - 1.4%
- Supervisors of Office and Administrative Support Workers - 14.9%
- Tellers - 2.7%

### UNDEREMPLOYMENT (ESTIMATED):

- Low hours - 2.7%
- Low income - 0.0%
- Mismatch of skills - 5.4%
- Total - 6.8%

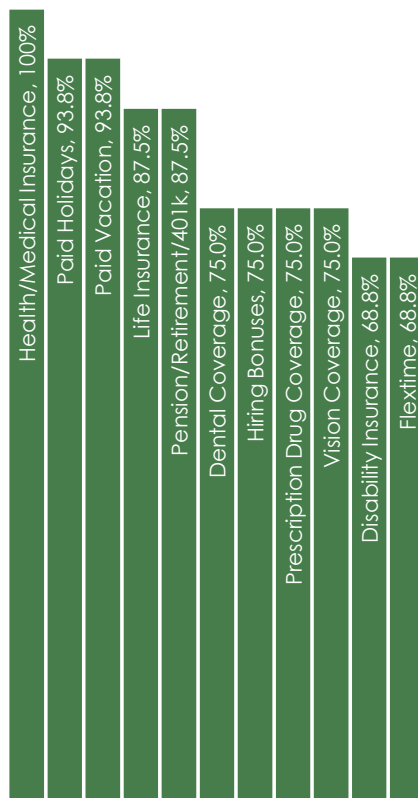
(Individuals counted only once when estimating Total Underemployment.)



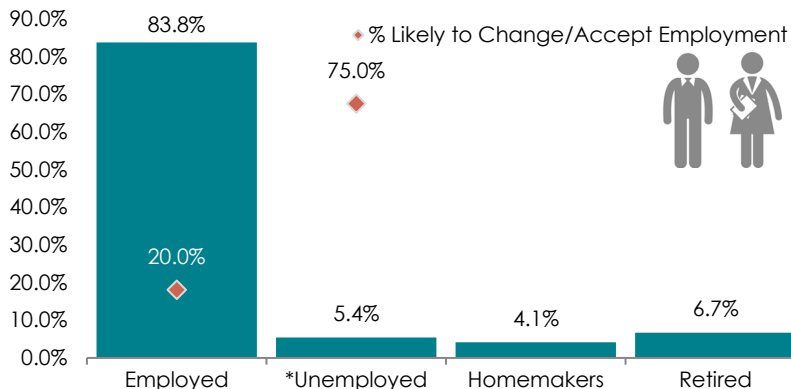
### CURRENT BENEFITS:



### DESIRED BENEFITS:



### ESTIMATED TOTAL BY EMPLOYMENT STATUS (PERCENTAGE):



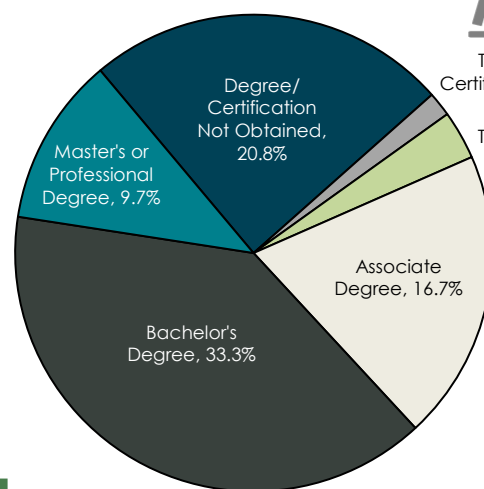
\*Employment status is self-identified by the survey respondent. The unemployment percentage does not reflect the unemployment rate published by the U.S. Bureau of Labor Statistics, which applies a stricter definition.

### EMPLOYMENT STATS:

- 50.0% paid an hourly wage
- 90.5% are/were employed full-time
- 9.5% are/were employed part-time
- 6.5% are/were self-employed
- 11.3% hold two or more jobs
- Currently working an average of 41 hours/week

### EDUCATIONAL LEVEL:

(84.7% HAVE AN EDUCATION BEYOND HIGH SCHOOL)



### TOP JOB SEARCH RESOURCES:

(For those seeking employment opportunities, by use.)

- Internet - 94.3%
  - [www.indeed.com](http://www.indeed.com)
  - [www.linkedin.com](http://www.linkedin.com)
  - Company/Organization Websites
- Networking through friends, family or acquaintances - 58.6%
- IowaWORKS Centers - 18.6%
- Private Employment Services - 17.1%



# LABOR CHARACTERISTICS



## FINANCIAL SERVICES

OCCUPATION	OCCUPATIONAL CODE	MEAN WAGE	ENTRY WAGE	EXPERIENCED WAGE	MEDIAN WAGE	MEAN ANNUAL SALARY
Accountants and Auditors	13-2011	\$33.33	\$22.16	\$38.92	\$29.63	\$69,331
Bill and Account Collectors	43-3011	\$18.39	\$14.96	\$20.11	\$17.77	\$38,253
Billing and Posting Clerks	43-3021	\$19.50	\$15.26	\$21.62	\$17.90	\$40,557
Bookkeeping, Accounting, and Auditing Clerks	43-3031	\$21.13	\$14.06	\$24.67	\$20.35	\$43,957
Brokerage Clerks	43-4011	\$22.63	\$19.15	\$24.37	\$20.15	\$47,080
Claims Adjusters, Examiners, and Investigators	13-1031	\$29.39	\$18.86	\$34.65	\$28.37	\$61,122
Compliance Officers	13-1041	\$31.01	\$22.08	\$35.47	\$29.99	\$64,496
Computer and Information Systems Managers	11-3021	\$57.88	\$40.43	\$66.61	\$56.58	\$120,393
Credit Analysts	13-2041	\$31.11	\$21.17	\$36.08	\$29.58	\$64,713
Credit Authorizers, Checkers, and Clerks	43-4041	\$19.07	\$14.25	\$21.49	\$18.66	\$39,670
Credit Counselors	13-2071	\$21.37	\$17.14	\$23.48	\$22.07	\$44,449
Customer Service Representatives	43-4051	\$20.13	\$13.75	\$23.32	\$18.74	\$41,875
Financial Analysts	13-2051	\$39.85	\$28.16	\$45.70	\$38.55	\$82,896
Financial Clerks, All Other	43-3099	\$17.97	\$14.03	\$19.94	\$17.76	\$37,374
Financial Examiners	13-2061	\$33.90	\$20.69	\$40.51	\$31.35	\$70,522
Financial Managers	11-3031	\$57.54	\$33.97	\$69.33	\$50.15	\$119,684
Financial Specialists, All Other	13-2099	\$33.03	\$22.98	\$38.06	\$29.70	\$68,708
First-Line Supervisors of Non-Retail Sales Workers	41-1012	\$47.32	\$27.56	\$57.20	\$39.62	\$98,425
First-Line Supervisors of Office and Administrative Support Workers	43-1011	\$27.51	\$18.45	\$32.04	\$25.57	\$57,228
Insurance Claims and Policy Processing Clerks	43-9041	\$20.53	\$17.32	\$22.13	\$20.75	\$42,697
Insurance Sales Agents	41-3021	\$35.69	\$17.84	\$44.61	\$28.01	\$74,231
Insurance Underwriters	13-2053	\$33.70	\$24.94	\$38.07	\$27.91	\$70,087
Loan Interviewers and Clerks	43-4131	\$21.07	\$16.58	\$23.31	\$21.22	\$43,823
Loan Officers	13-2072	\$41.87	\$23.91	\$50.86	\$37.27	\$87,097
New Accounts Clerks	43-4141	\$19.53	\$16.95	\$20.82	\$18.85	\$40,622
Personal Financial Advisors	13-2052	\$61.69	\$24.05	\$80.51	\$44.42	\$128,321
Securities, Commodities, and Financial Services Sales Agents	41-3031	\$34.23	\$18.20	\$42.25	\$23.29	\$71,202
Statisticians	15-2041	\$31.08	\$17.26	\$37.99	\$27.00	\$64,641
Telemarketers	41-9041	\$14.43	\$12.29	\$15.51	\$13.65	\$30,024
Tellers	43-3071	\$16.37	\$13.84	\$17.64	\$16.41	\$34,053

The 2023 Iowa Wage data for the Prosperity Eastern Iowa Region Laborshed area was produced by the Labor Force & Occupational Analysis Bureau to provide communities local information on wages by occupation. The source of the wage and employment data is based on the May 2022 OEWS estimates. Additional occupational wage and employment data can be found at <https://workforce.iowa.gov/laborshed>.

Balance of data compiled by Iowa Workforce Development using Laborshed data released in 2024.



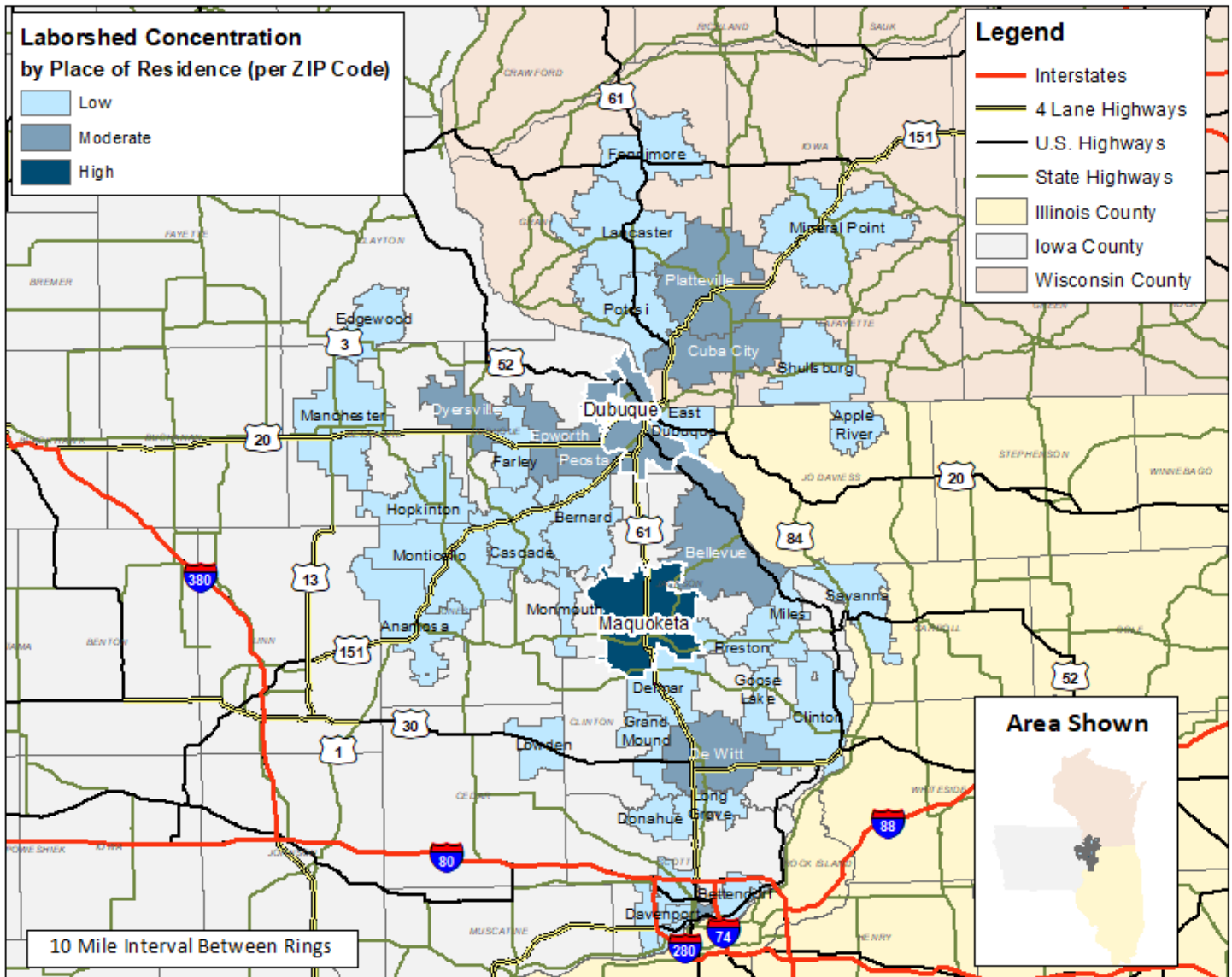
# LABOR CHARACTERISTICS



## WAREHOUSE & DISTRIBUTION

### PROSPERITY EASTERN IOWA REGION

CONCENTRATION OF RESPONDENTS WITHIN THE LABORSHED AREA  
WITH TRANSFERABLE EXPERIENCE/SKILLS BY PLACE OF RESIDENCE



Workers who have transferable experience/skills in the industry are currently commuting an average of 18 miles one way for work. Those who are likely to change/accept employment are willing to commute an average of 27 miles one way for the right employment opportunity.

FOR MORE INFORMATION REGARDING THE PROSPERITY EASTERN IOWA REGION REGIONAL LABORSHED, CONTACT:



Prosperity Eastern Iowa  
7600 Commerce Park  
Dubuque, IA 52002

Phone: (563) 556-4166 | E-mail: [hmcpherson@ecia.org](mailto:hmcpherson@ecia.org)  
[www.prosperityeasterniowa.org](http://www.prosperityeasterniowa.org)

# LABOR CHARACTERISTICS



## WAREHOUSE & DISTRIBUTION

### ESTIMATED AVAILABLE LABOR PER OCCUPATIONAL CATEGORY:

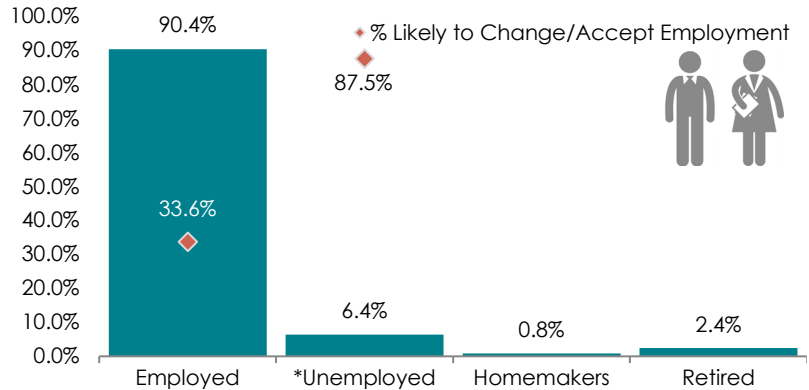
- Aircraft Mechanics and Service Technicians - 0.8%
- Automotive Service Technicians and Mechanics - 7.2%
- Bus and Truck Mechanics and Diesel Engine Specialists - 0.8%
- Cleaners of Vehicles and Equipment - 1.6%
- First-Line Supervisors of Mechanics, Installers, and Repairers - 4.8%
- First-Line Supervisors of Production and Operating Workers - 6.4%
- Heavy and Tractor-Trailer Truck Drivers - 26.4%
- Industrial Machinery Mechanics - 0.8%
- Industrial Truck and Tractor Operators - 2.4%
- Inspectors, Testers, Sorters, Samplers, and Weighers - 2.4%
- Installation, Maintenance, and Repair Workers, All Other - 4.8%
- Laborers and Freight, Stock, and Material Movers, Hand - 8.8%
- Light Truck or Delivery Services Drivers - 1.6%
- Logisticians - 3.2%
- Packers and Packagers, Hand - 4%
- Production Workers, All Other - 8%
- Production, Planning, and Expediting Clerks - 1.6%
- Protective Service Workers, All Other - 0.8%
- Railroad Conductors and Yardmasters - 0.8%
- Sailors and Marine Oilers - 0.8%
- Shipping, Receiving, and Traffic Clerks - 2.4%
- Team Assemblers - 5.6%
- Transportation, Storage, and Distribution Managers - 3.2%
- Weighers, Measurers, Checkers, and Samplers, Recordkeeping - 0.8%

### UNDEREMPLOYMENT (ESTIMATED):

- Low hours - 2.4%
- Low income - 2.4%
- Mismatch of skills - 9.6%
- Total - 13.6%

(Individuals counted only once when estimating Total Underemployment.)

### ESTIMATED TOTAL BY EMPLOYMENT STATUS (PERCENTAGE):



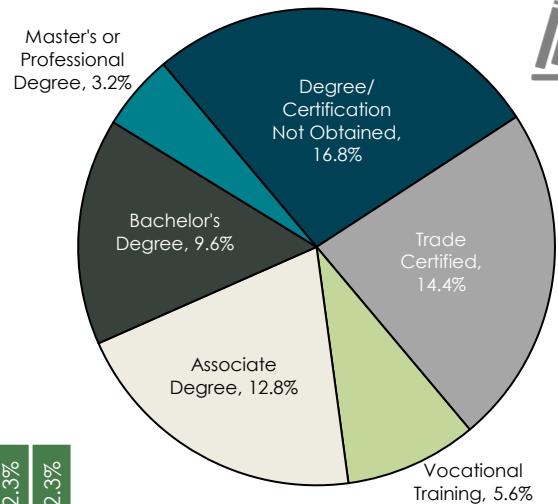
\*Employment status is self-identified by the survey respondent. The unemployment percentage does not reflect the unemployment rate published by the U.S. Bureau of Labor Statistics, which applies a stricter definition.

### EMPLOYMENT STATS:

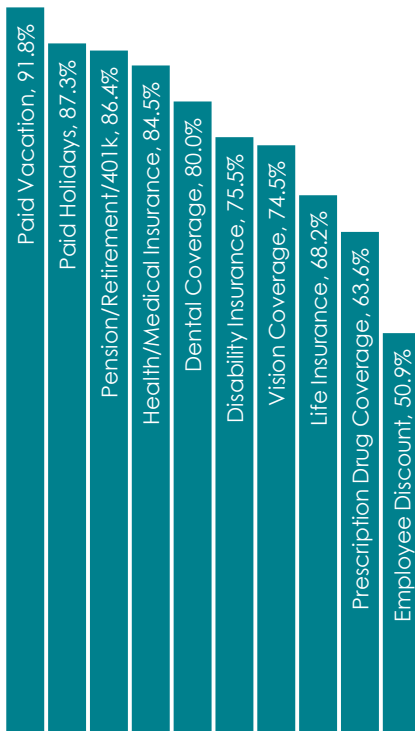
- 63.2% paid an hourly wage
- 91.2% are/were employed full-time
- 8.8% are/were employed part-time
- 9.7% are/were self-employed
- 15.9% hold two or more jobs
- Currently working an average of 47 hours/week

### EDUCATIONAL LEVEL:

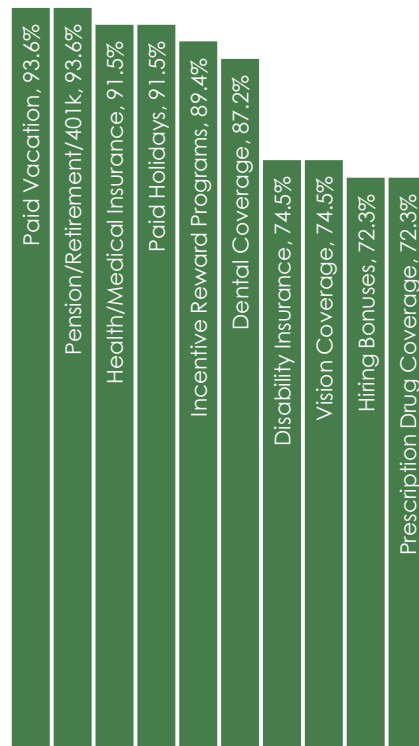
(62.4% HAVE AN EDUCATION BEYOND HIGH SCHOOL)



### CURRENT BENEFITS:



### DESIRED BENEFITS:



### TOP JOB SEARCH RESOURCES:

(For those seeking employment opportunities, by use.)

- Internet - 80.3%
  - [www.indeed.com](http://www.indeed.com)
  - [www.linkedin.com](http://www.linkedin.com)
  - [www.facebook.com](http://www.facebook.com)
- Networking through friends, family or acquaintances - 47.5%
- IowaWORKS Centers - 22.1%
- Private Employment Services - 14.8%



# LABOR CHARACTERISTICS



## WAREHOUSE & DISTRIBUTION

OCCUPATION	OCCUPATIONAL CODE	MEAN WAGE	ENTRY WAGE	EXPERIENCED WAGE	MEDIAN WAGE	MEAN ANNUAL SALARY
Aircraft Mechanics and Service Technicians	49-3011	\$34.43	\$26.63	\$38.33	\$35.95	\$71,618
Automotive Body and Related Repairers	49-3021	\$24.05	\$17.70	\$27.23	\$23.18	\$50,032
Automotive Service Technicians and Mechanics	49-3023	\$22.18	\$14.75	\$25.90	\$21.54	\$46,138
Bus and Truck Mechanics and Diesel Engine Specialists	49-3031	\$25.09	\$18.16	\$28.55	\$23.76	\$52,183
Captains, Mates, and Pilots of Water Vessels	53-5021	\$44.38	\$28.69	\$52.23	\$39.58	\$92,319
Cargo and Freight Agents	43-5011	\$23.59	\$17.71	\$26.53	\$22.08	\$49,066
Cleaners of Vehicles and Equipment	53-7061	\$14.85	\$10.62	\$16.96	\$13.38	\$30,882
Conveyor Operators and Tenders	53-7011	\$20.00	\$14.78	\$22.60	\$20.42	\$41,592
Dispatchers, Except Police, Fire, and Ambulance	43-5032	\$24.19	\$16.21	\$28.18	\$23.16	\$50,312
First-Line Supervisors of Mechanics, Installers, and Repairers	49-1011	\$34.13	\$22.41	\$39.99	\$32.98	\$70,988
First-Line Supervisors of Production and Operating Workers	51-1011	\$31.50	\$21.42	\$36.54	\$30.15	\$65,511
Heavy and Tractor-Trailer Truck Drivers	53-3032	\$25.07	\$17.70	\$28.75	\$23.63	\$52,139
Helpers--Installation, Maintenance, and Repair Workers	49-9098	\$16.79	\$12.58	\$18.89	\$16.63	\$34,916
Helpers--Production Workers	51-9198	\$20.02	\$15.06	\$22.50	\$20.35	\$41,642
Industrial Machinery Mechanics	49-9041	\$28.75	\$22.20	\$32.02	\$28.92	\$59,797
Industrial Truck and Tractor Operators	53-7051	\$20.14	\$16.49	\$21.96	\$19.04	\$41,885
Inspectors, Testers, Sorters, Samplers, and Weighers	51-9061	\$22.38	\$16.83	\$25.15	\$22.24	\$46,544
Installation, Maintenance, and Repair Workers, All Other	49-9099	\$19.31	\$14.37	\$21.78	\$18.64	\$40,171
Laborers and Freight, Stock, and Material Movers, Hand	53-7062	\$18.06	\$13.38	\$20.41	\$17.70	\$37,575
Light Truck or Delivery Services Drivers	53-3033	\$19.43	\$11.88	\$23.21	\$17.65	\$40,420
Logisticians	13-1081	\$35.17	\$22.10	\$41.70	\$37.27	\$73,151
Machine Feeders and Offbearers	53-7063	\$21.86	\$14.40	\$25.59	\$20.33	\$45,476
Maintenance and Repair Workers, General	49-9071	\$21.47	\$14.60	\$24.90	\$21.04	\$44,653
Motor Vehicle Operators, All Other	53-3099	\$19.87	\$11.89	\$23.86	\$21.44	\$41,328
Packers and Packagers, Hand	53-7064	\$16.23	\$13.20	\$17.75	\$15.97	\$33,768
Production Workers, All Other	51-9199	\$19.65	\$14.30	\$22.33	\$18.97	\$40,874
Production, Planning, and Expediting Clerks	43-5061	\$27.74	\$19.23	\$31.99	\$27.25	\$57,697
Protective Service Workers, All Other	33-9099	\$16.38	\$13.27	\$17.93	\$16.14	\$34,063
Sailors and Marine Oilers	53-5011	\$36.48	\$18.13	\$45.66	\$23.45	\$75,888
Shipping, Receiving, and Traffic Clerks	43-5071	\$19.56	\$14.94	\$21.87	\$18.77	\$40,694
Transportation Inspectors	53-6051	\$47.05	\$35.03	\$53.06	\$46.73	\$97,869
Transportation, Storage, and Distribution Managers	11-3071	\$45.14	\$28.82	\$53.30	\$40.86	\$93,882
Weighers, Measurers, Checkers, and Samplers, Recordkeeping	43-5111	\$19.01	\$13.88	\$21.58	\$18.34	\$39,549

The 2023 Iowa Wage data for the Prosperity Eastern Iowa Region Laborshed area was produced by the Labor Force & Occupational Analysis Bureau to provide communities local information on wages by occupation. The source of the wage and employment data is based on the May 2022 OEWS estimates. Additional occupational wage and employment data can be found at <https://workforce.iowa.gov/laborshed>.

Balance of data compiled by Iowa Workforce Development using Laborshed data released in 2024.